



# ERTELALSOP

THE FIRST NAME IN LIQUID FILTRATION™

## CELPURE®

### HIGH PERFORMANCE DIATOMACEOUS EARTH FOR DISTILLED SPIRITS

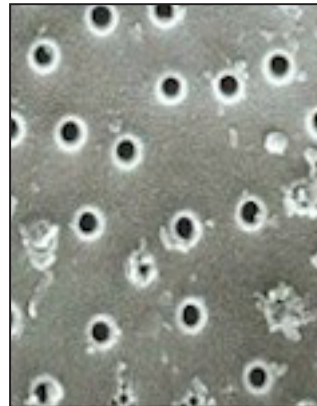
ErtelAlsop offers Celpure S65, S300, and S1000 grades of Diatomaceous Earth (DE) to accommodate our customers with their clarification needs. Whether you need a bag or a pallet, ErtelAlsop can supply you with ultra pure, acid washed Celpure® Diatomaceous Earth. For more information please see below, or contact ErtelAlsop for more information.

#### CELPURE® HIGH PURITY DIATOMITE

Celpure® is a highly purified diatomaceous earth for use in the maintenance of filter cake permeability through the bodyfeed of the media upstream of the filter press, filter housing or vessel. Due to the exceptional high purity of this filter aid, Celpure® diatomite is particularly well suited for pressure filtration in high purity chemical, food & beverage, and critical pharmaceutical or biotech applications.

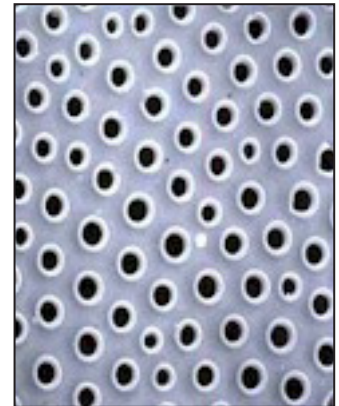
Celpure patented manufacturing process is a major advance in filter aid technology and produced in a standalone FDA approved facility. The process generates a media that surpasses conventional diatomite filter aids in purity, performance, regulatory support, and finished product consistency.

Studies and field experience show that after replacing conventional diatomite filter aids with Celpure diatomite filter aids, extractable impurities are significantly reduced adding to more consistent processes and improved yields.



**Standard Diatomaceous Earth - Calcified Diatoms**

Scanning electron micrograph of conventional food grade diatom surface (5000x). Conventional diatomite undergoes calcination without purification, this fuses impurities to the diatoms surface.



**Celpure Diatomaceous Earth - Clean Diatoms**

Scanning electron micrograph of Celpure diatom surface (5000x). Celpure media undergoes calcination after purification. This minimizes impurities and increases bulk density.

### BENEFITS OF CELPURE DE

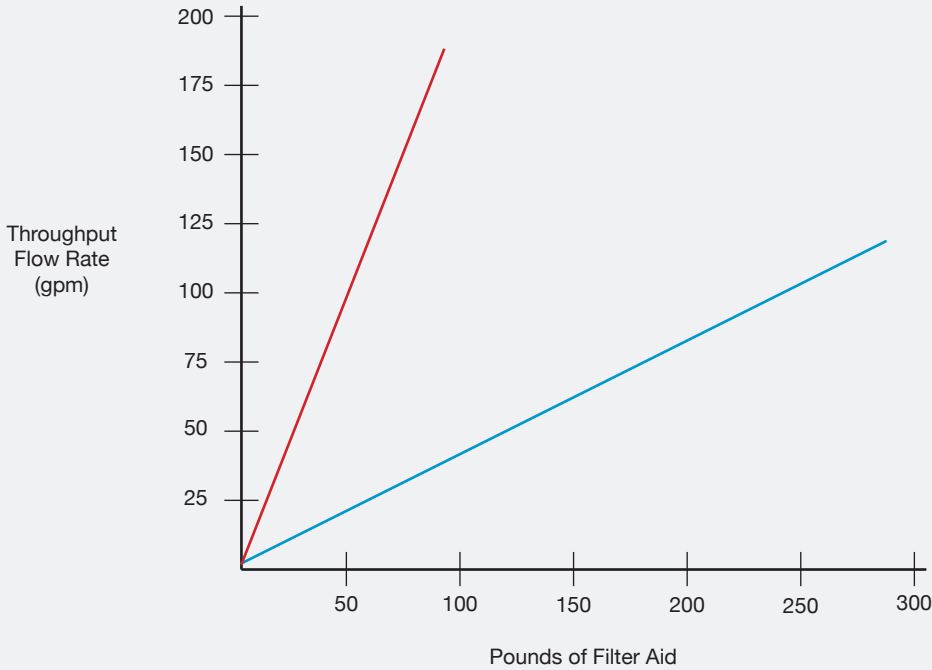
- 40-50% increased flow rate
- 5-7x increased throughput per pound of filter aid
- 45% average reduction in overall cost of processing
- Less filter aid required which results in:
  - Less warehouse space
  - Lower disposal costs
  - Lower trucking costs

| WHISKEY TRIAL 1        | STANDARD DE | CELPURE S1000 DE |
|------------------------|-------------|------------------|
| Total Gallons Filtered | 77,000      | 176,000          |
| Total Lbs of DE used   | 286         | 86               |
| Flow Rate              | 122 gpm     | 183 gpm          |

| WHISKEY TRIAL 2        | STANDARD DE | CELPURE S1000 DE |
|------------------------|-------------|------------------|
| Total Gallons Filtered | 40,000      | 85,000           |
| Total Lbs of DE used   | 385         | 145              |
| Flow Rate              | 50 gpm      | 70 gpm           |

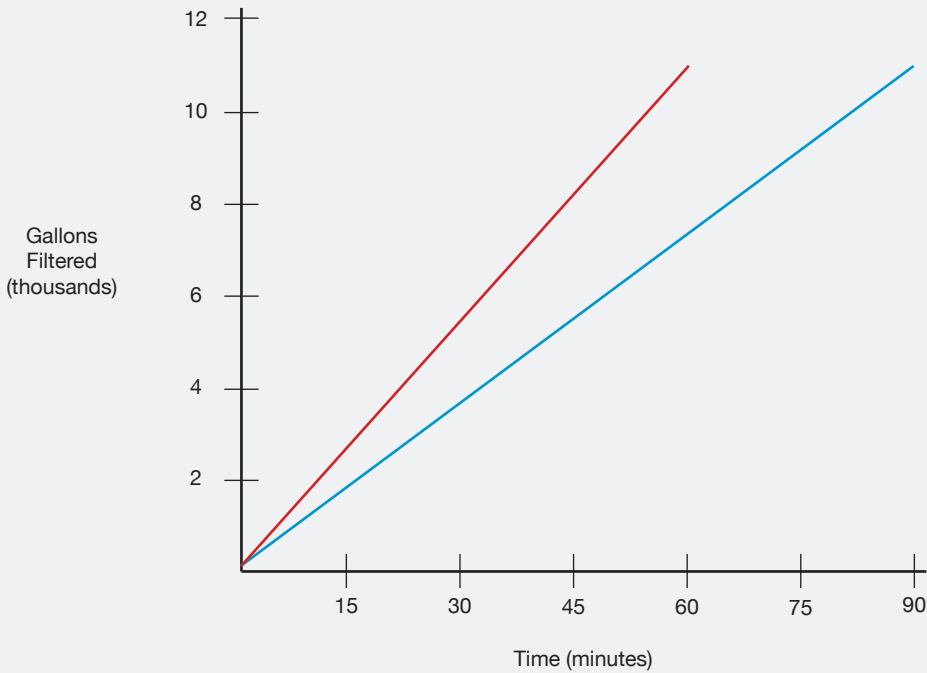
FILTER AID

# WHISKEY WITH CELPURE S1000 - PRESSURE LEAF FILTER RESULTS



— Celpure S1000  
— Standard DE

7.6 x Greater Throughput  
with Celpure S1000



— Celpure S1000  
— Standard DE

50% Faster Throughput  
with Celpure S1000

For additional  
product information visit  
**ErtelAlsop.com**

**Technical Bulletin Celpure-17**

**ErtelAlsop**

132 Flatbush Avenue  
Kingston, NY 12401 US

ErtelAlsop.com  
800.553.7835 Telephone  
845.853.1526 Fax

Keep in touch.

Visit us at [ErtelAlsop.com](http://ErtelAlsop.com)

Your Local Distributor

